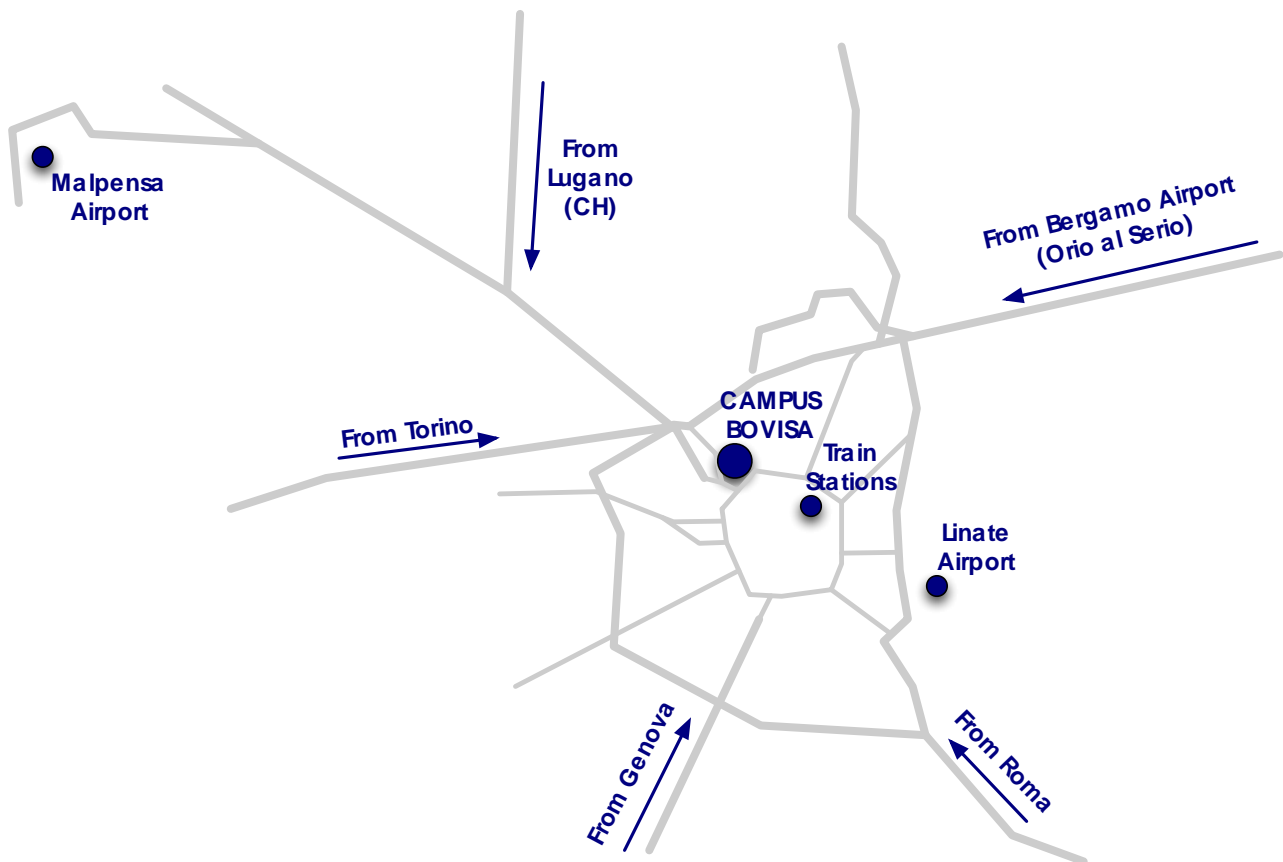


How to get here!



Sala Consiglio - 1st floor - Dipartimento di Meccanica - Politecnico di Milano – Bovisa Campus - Building B23, Via Giuseppe La Masa 1 – Milan – Italy

HOW TO REACH CAMPUS BOVISA

Milan is conveniently located in the heart of Europe and can be easily reached from all over the globe. You can reach the Campus by either the public transportation system or car.

BY PUBLIC TRANSPORT

Whether you travel by plane or train, Milan offers you several alternatives.

By air: Malpensa is the main airport and serves intercontinental and domestic flights. European and domestic flights also land at Linate airport (just outside the city). In addition, Bergamo airport is a major hub for low-cost airlines.

By train: Milan is a major railway hub. The main Italian cities are just a few hours away by high-speed train. Direct connections to France, Switzerland, Germany and Austria are also available. Connections to the conference venue can be easily found from the following stations:

- Milano Centrale
- Milano Porta Garibaldi
- Milano Cadorna

REACHING THE CAMPUS FROM MALPENSA AIRPORT

Take the Malpensa Express train that leaves Terminal 1 every 30 min. The trip lasts about 35-40 minutes and the tickets can be bought at the ticket office of Malpensa railway station or on the train paying an extra fee. Get off at Bovisa station. Once outside, turn right and go down the stairs. Then turn left in via Privata Mariani and, at the end of the street, turn right in via La Masa. The conference venue is on your left (see map).

Taking a taxi from Malpensa Airport will not help you saving time (except in the late evening hours) and could be quite expensive.

REACHING THE CAMPUS FROM LINATE AIRPORT

Catch 73X bus, a non-stop bus which will take you to the city centre (Piazza S. Babila). Tickets can be bought at the bookstall in the airport or on the bus paying an extra fee. Then, catch the underground (red line – MM1) for “Rho Fiera” or “Bisceglie” and get off at Cadorna station. In the daytime, trains leave Cadorna station every 5-10 min. Please check whether the train stops at Bovisa station or not. The trip will last about 50 minutes

A taxi fare will take from 45 to 60 minutes, depending on road traffic.

REACHING THE CAMPUS FROM ORIO AL SERIO AIRPORT

Catch the bus to Milano Centrale, then take the underground to Cadorna and follow the instructions above-mentioned. It takes at least 1h30 to reach Bovisa Politecnico. A taxi will be faster but quite expensive.

REACHING THE CAMPUS FROM MILANO CENTRALE RAILWAY STATION

You can take the train leaving the station every 30 minutes to Malpensa Airport, which stops at “Bovisa”.

In alternative, you can

- either walk to the Metro line stop “Repubblica” (5-10 min.) and take the “S” trains on the platform no. 2
- or take the underground, M2 green line to “Garibaldi” station and then take the “S” trains on the platform no. 2.

The “S” trains either stop at Bovisa Station or at Villapizzone Station. Then you can reach the conference venue following the map below:



[TRENORD WEBSITE FOR MORE INFORMATION AND TIME SCHEDULE](#)

[METRO LINES](#)

REACHING THE CAMPUS FROM MILANO GARIBALDI RAILWAY STATION

Take the "S" trains to Bovisa (S1, S2, S3, S4, S13, S14) or Villapizzone (S5 or S6) railway stations, then follow the map to reach the Conference Venue



REACHING THE CAMPUS FROM MILANO CADORNA FNM

Take any train to “Bovisa” except for “Malpensa Express” which does not stop at Bovisa station. The trip will last about 10 minutes

From the Bovisa Politecnico train Station, follow the map

REACHING THE CAMPUS FROM THE CITY CENTRE

Beyond the connections from the above stations, which are located in the city center, the campus can be easily reached from downtown by taxi or bus:

By Bus:

Bus 92 - Bovisasca St. Bovisa FNM

Tram 2 – Piazza Bausan Stop

[ATM WEBSITE FOR MORE INFORMATION AND TIME SCHEDULE](#)

If you take a taxi, please specify to the driver the full address of the department because there are more than one Politecnico Campus.

BY CAR

By car: A dense network of motorways connects Milan to other Italian cities and to the rest of Europe. The conference venue is the Campus “Bovisa” of Politecnico di Milano, just a few minutes away from the city center and directly connected to Malpensa airport by train.

Go from via Mac Mahon to Piazza Castelli, then turn right in viale degli Ailanti and turn left 100m after. Go through the underpass and turn in via Giampietrino at the stop sign. Go straight on, enter the one-way street and go to via Privata La Masa. The main entrance is 400m after on your right.

Useful Links:

[Linate and Malpensa Airports](#)

[Orio al Serio Airport](#)

[Public Transports in Milan](#)

[Network Map and Urban Railway System of Milan](#)

[Milan Tourism](#)

[Municipality of Milan](#)

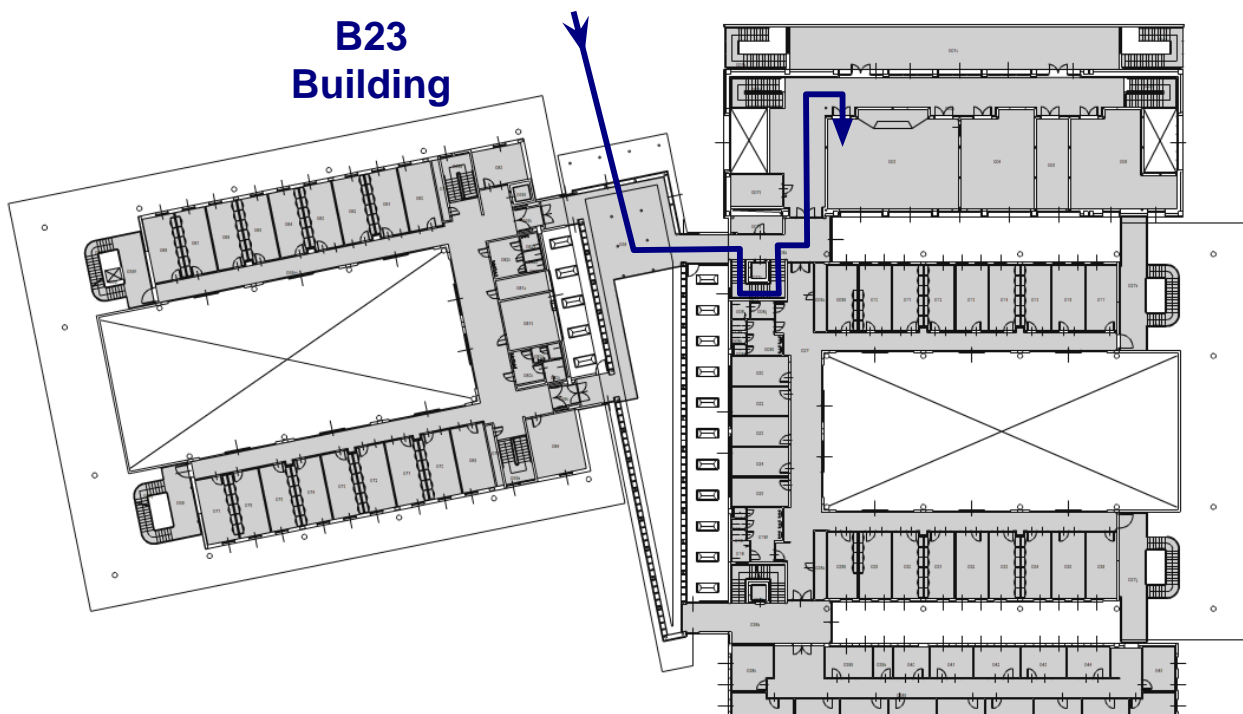
[Map of Milan](#)

[The Weather in Milan](#)

Conference Room

Once you reach the B23 building, the conference room is a few steps away.

Enter the B23 building hall, turn left and take the stairs on your right. At the end of the stairs turn right and then left. The entrance of Sala Consiglio is on your right side.



Accommodation (suggested hotels)

HOTELS NEXT TO MILANO BOVISA:

Hotel Sunflower (**)**

Piazzale Lugano, 10 – 20158 Milan

Tel. +39 02 39314071

Fax +39 02 39320377

www.hotelsunflower.it

info@hotelsunflower.it

Walking distance: 1 km (~14 mins)

Radisson Blu Hotel (**)**

Via Villapizzone, 24 – 20156 Milan

Tel. +39 02 3631888

Fax +39 02 3631870

www.radissonblu.com

info.milan@radissonblu.com

Walking distance: 1,3 km (~16 mins)

HOTELS DOWNTOWN:

Hotel Palazzo delle Stelline (*)**

Corso Magenta, 61 – 20123 Milan

Tel. +39 02 4818431

Fax +39 02 48519097

www.hotelpalazzostelline.it

info@hotelpalazzostelline.it

Walking distance: 0,45 km (~6 mins) to Milano Cadorna Station

Best Western Hotel Mozart (**)**

Piazza Gerusalemme, 6 – 20154 Milan

Tel. +39 02 33104215

Fax +39 02 33103231

www.hotelmozartmilan.com

info@hotelmozartmilan.com

Walking distance: 0,5 km (~7 mins) to Milano Domodossola Station (in between the Milano Cadorna and Milano Bovisa Station).

Mokinba Hotels King (**)**

Corso Magenta, 19 – 20123 Milan

Tel. +39 02 874432

Fax +39 02 89010798

www.mokinba.it

king@mokinba.it

Walking distance: 0,4 km (~6 mins) to Milano Cadorna Station.

Best Western Hotel Milton Milano (**)**

Via Enrico Annibale Butti, 9 – 20158 Milan

Tel. +39 02 66802366 Fax +39 02 66802909

www.miltonmilano.it

infomiltonmilano@gmail.com

Walking distance: 0,35 km (~5 mins) to Milano Lancetti Station (in between the Milano Porta Garibaldi and Milano Bovisa Station).